



Powerline Network

Instant Networks for Internet Access...and More!
Solution for SOHO, SMALL OFFICE AND HOME OFFICE

Utility Program User Guide
for

ALL168208

Index

1.	Introduction	3
1.1.	System Requirements.....	3
1.2.	Installation.....	3
1.3.	Run the Utility.....	6
2.	How to use.....	7
2.1.	Main Frame	7
2.2.	Privacy Frame	11
2.3.	Diagnostics Frame.....	13
2.4.	About Frame	16

1. Introduction

This Utility Program enables users to find ALL168208 200Mbps Powerline 4-Port HUB and ALL168205 200Mbps PLC-Ethernet Bridge devices on the Powerline network, measures data rate performance, ensures privacy and performs diagnostics by setting user defined secure Powerline networks.

1.1. System Requirements

Operating System	Microsoft Windows 2000 , XP, Vista 32-bit
CPU	Intel Pentium III or better, clock rate faster than 2.0GHz recommended
RAM	At least 128MB
Screen Resolution	Any resolution
Free Disk Space	At least 20MB
Network Interface	At least one Fast Ethernet (100 Mbps) network card, and Ethernet Cord

1.2. Installation

First step, you need to verify that there is no any other Powerline Utility installed on your computer before installing this utility. If there is another utility installed, please uninstall it and restart your computer.

Second step, please insert the Utility CD-ROM into the computer's CD-ROM drive. The CD will launch a browser for installation as shown in Figure 1. Click the necessary link to start installation:

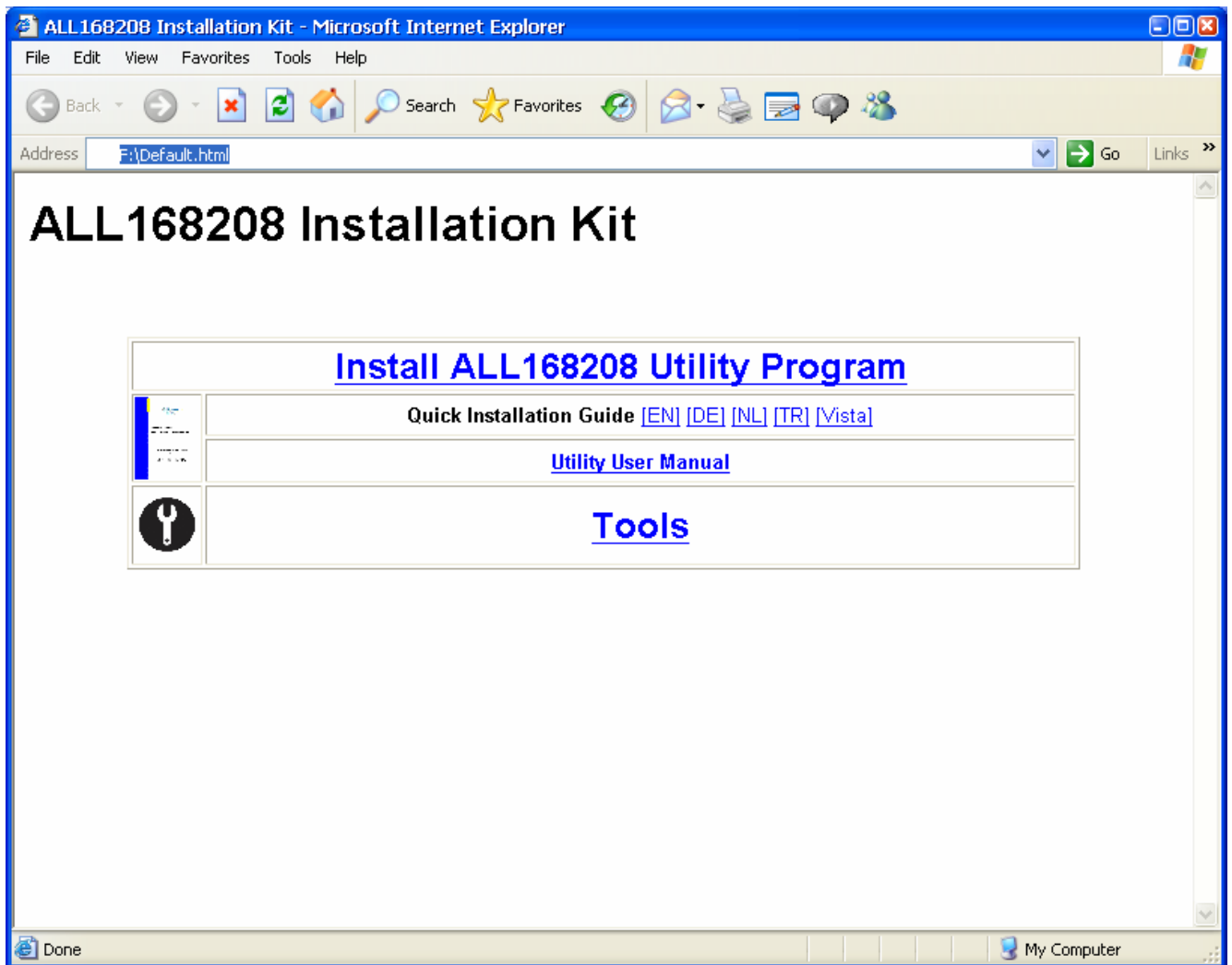


Figure 1: Installation Browser Snapshot

The following dialog box will show up after the user clicks the "Install ALL168208 Utility Program" link. Follow the steps to install the Utility Program. No password or CD-Key is needed.

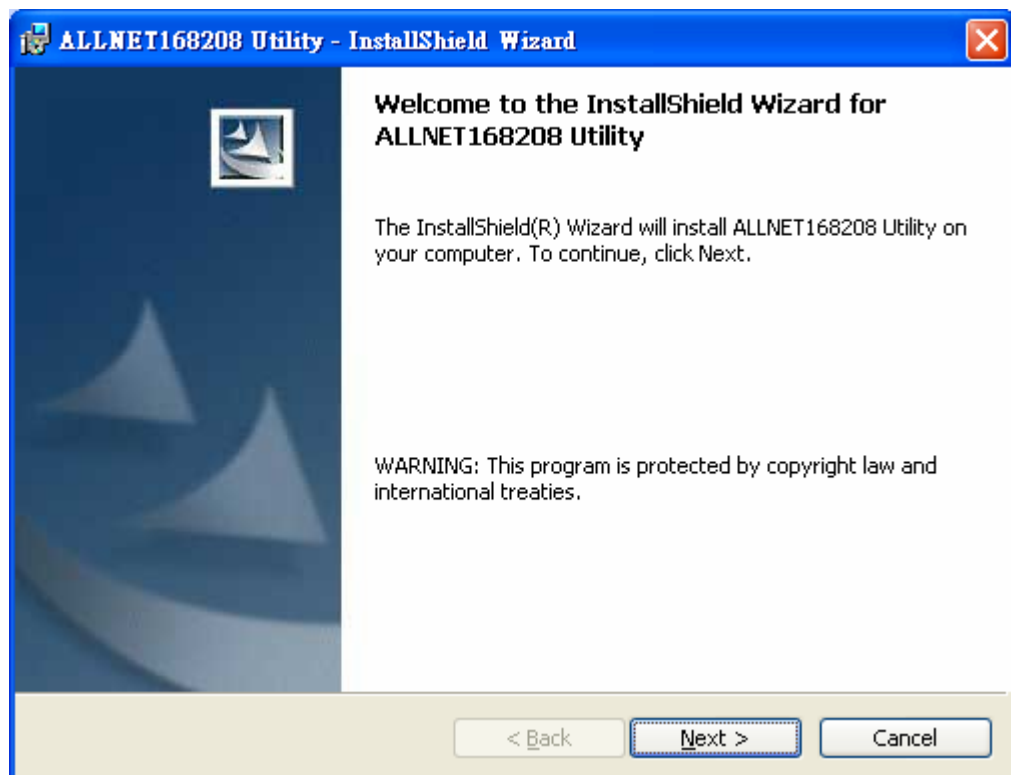


Figure 2: Installation Dialog Box

1.3. Run the Utility

After installing the Utility Program, please run the Utility Program from the Start / All Programs or double-click the utility icon on the desktop. Figure 3 is the main frame screen of the utility program. This screen shows a ALL168208 200Mbps PLC-Ethernet Bridge device connected as a local device and another ALL168208 200Mbps PLC-Ethernet Bridge devices as remote devices.

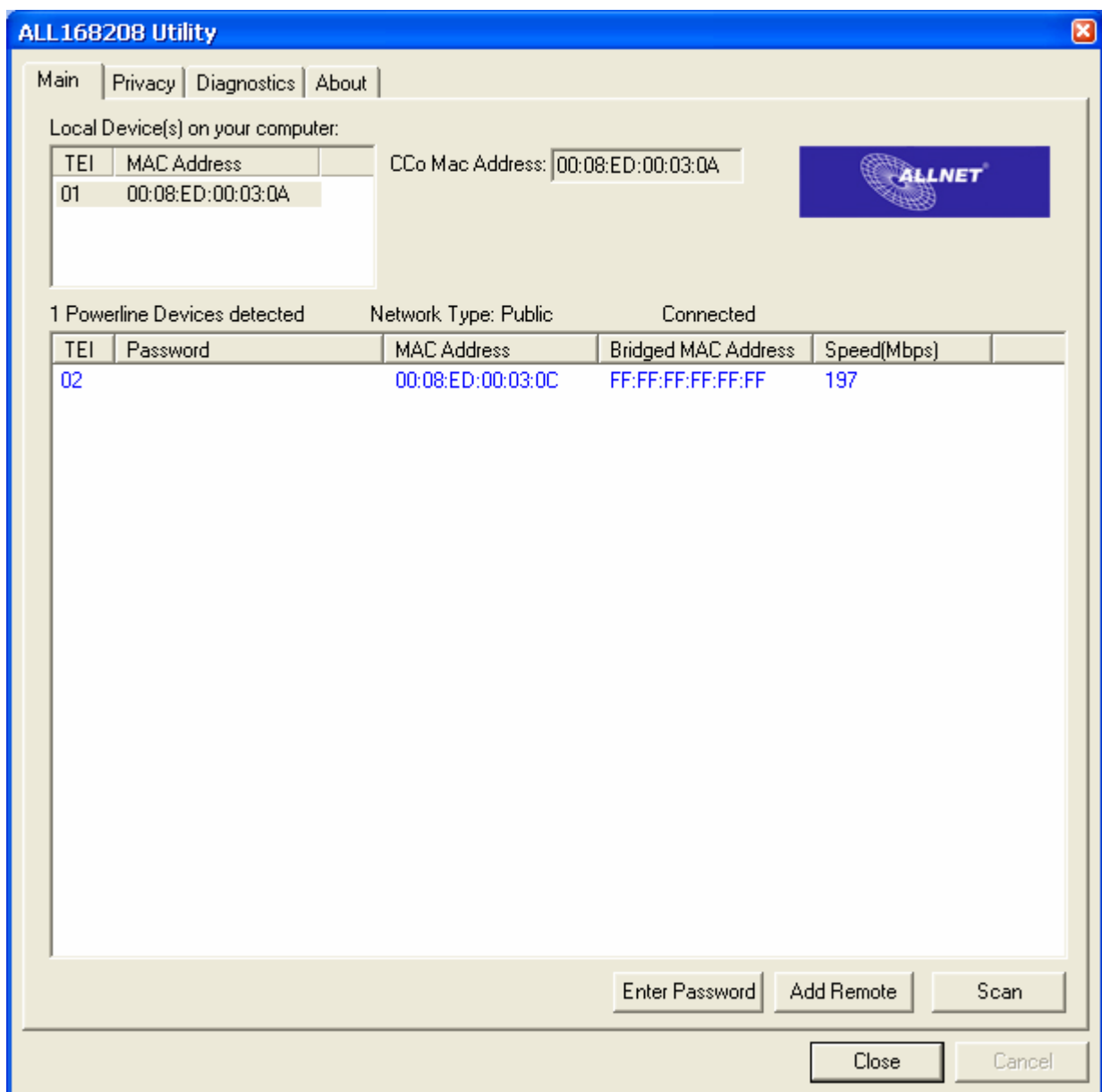


Figure 3: Utility Program Main Screen

2. How to use

There are four Tabs (Main, Privacy, Diagnostics, About) in the Utility program layout. Each Tab will launch a different frame and provide different functions. Sec. 2.1~2.4 explains each frame's functions:

2.1. Main Frame

The "Main" frame will list all the ALL168208 200Mbps PLC-Ethernet Bridge devices logically connected in current available Powerline networks.

Upper Window

The upper window, entitled "Local Device(s) on your computer", shows all the local ALL168208 200Mbps PLC-Ethernet Bridge devices directly connected to your computer via Ethernet. In most cases, there is only one device shown in the window. If you have more than one NIC (Network Interface Card) on your computer and each of them connects ALL168208 200Mbps PLC-Ethernet Bridge devices, you will find more than one local ALL168208 200Mbps PLC-Ethernet Bridge devices shown in the upper window. The Utility will scan the Powerline network periodically to search for all the ALL168208 200Mbps PLC-Ethernet Bridge devices, and keep the information updated.

CCo MAC Address

This window shows the MAC Address of the "CCo"(Central Coordinator) inside this Powerline network. The CCo is automatically appointed by the Powerline network and cannot be changed unless the original CCo is unplugged.

Lower Window

The lower window lists all the ALL168208 200Mbps PLC-Ethernet Bridge devices discovered in the current logical Powerline networks. This window will report each ALL168208 200Mbps PLC-Ethernet Bridge device's connection status, as shown in Figure 4:

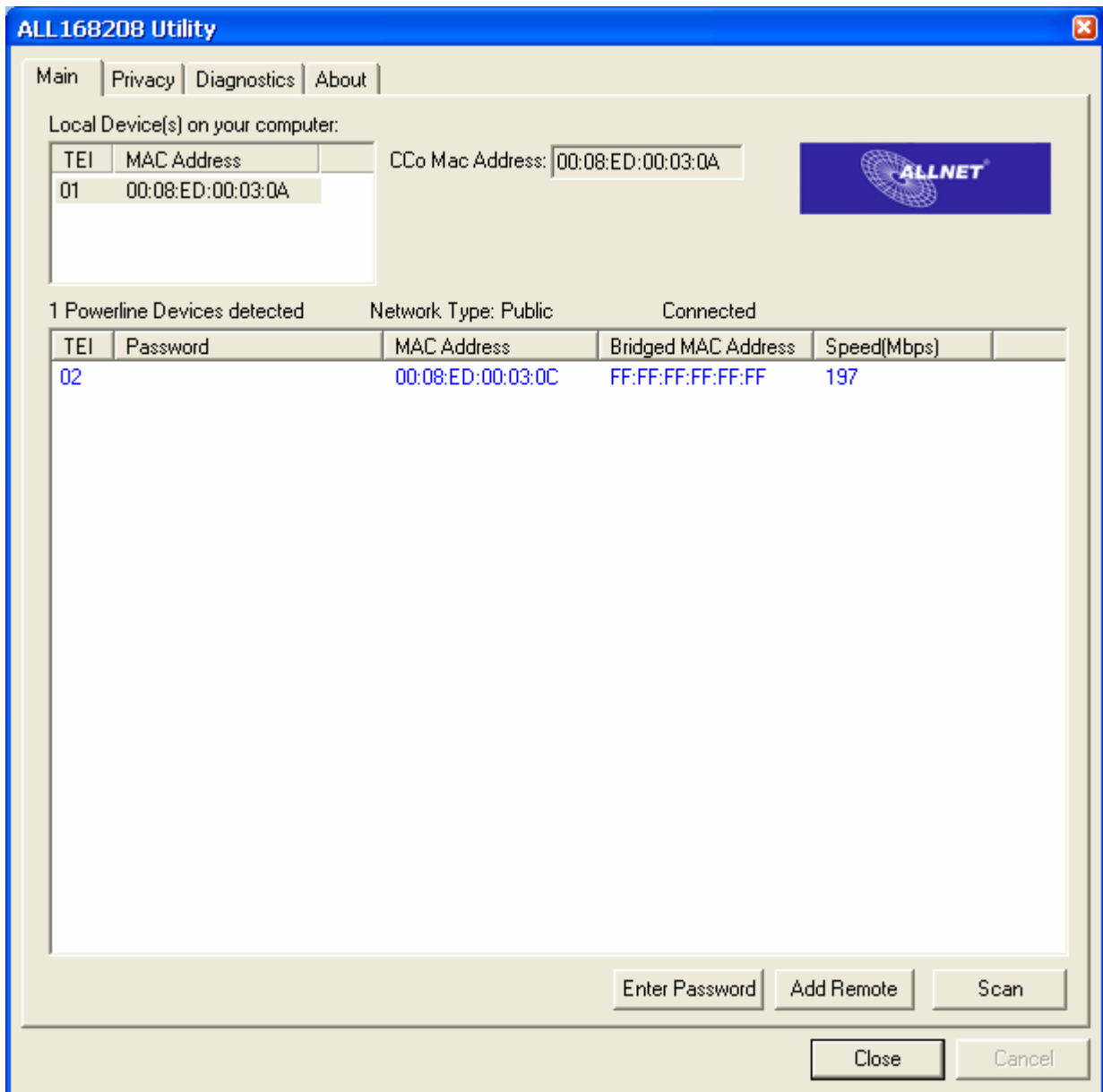


Figure 4: The main frame screen

The “**TEI**” column shows the unique “**T**erminal **E**quipment **I**dentifier” of each ALL168208 200Mbps PLC-Ethernet Bridge inside the Powerline network. This TEI value is automatically appointed by the Powerline network and cannot be changed unless the device is unplugged.

The “**Password**” column shows each ALL168208 200Mbps PLC-Ethernet Bridge’s password. You can input the password by clicking the “Enter Password” button.

The “**MAC Address**” column shows the ALL168208 200Mbps PLC-Ethernet Bridge’s MAC address.

The “**Bridged MAC Address**” column shows the NIC (Network Interface Card)

this ALL168208 200Mbps PLC-Ethernet Bridge connects to. If no NIC is connected, its default value is “ff:ff:ff:ff:ff:ff”.

The “**Speed(Mbps)**” column shows the remote device’s mutual transmit speed with the local device, in Mbps(Million bits per second).

“Enter Password” button

If you want to create a private network, you need to enter the device password first. Please click on the intended device to make it highlighted then click the “Enter Password” button, and the “Set Device Password” dialog box will show up(Figure 5). The selected device’s TEI and MAC address are shown in the dialog box. After entering the password, click “OK” button. If the input password does not match the device’s real password, error message will be shown and please retry again.

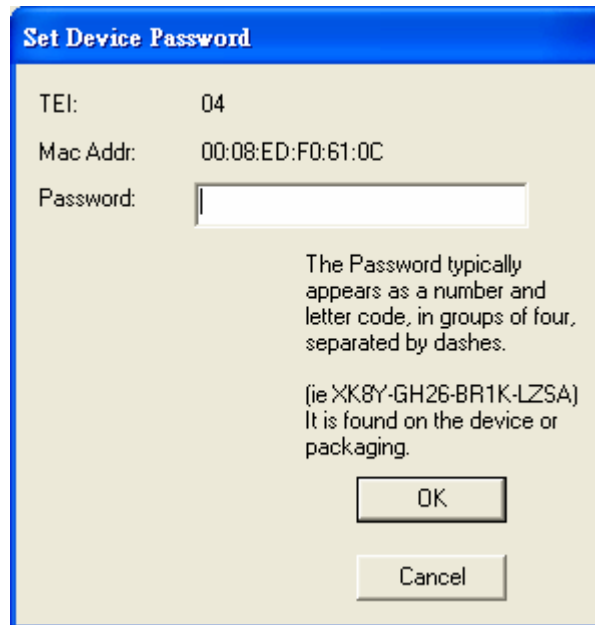


Figure 5: Set Device Password

“Add” button

The “Add” button is used to add a remote device which is not listed in the lower window to your logical network (for example, a device is currently in another logical network). You can click the “Add” button to add the device to your logical network. The dialog box in Figure 6 is shown after clicking the “Add” button, and it allows you to enter both the device name and the password. The device will be added to your logical network only if the Network and DAK passwords are both correct. Like the “Enter Password” function, incorrect passwords will be warned and denied.



Figure 6: Add Remote Device

“Scan” button

The “Scan” button is used to search for the ALL168208 200Mbps PLC-Ethernet Bridge devices connected to your logical network immediately. By default setting, It will automatically scan every 10 seconds and updates the display lists.

2.2. Privacy Frame

When rolling out of factory, every ALL168208 200Mbps PLC-Ethernet Bridge device carries a default logical network name: **“HomePlugAV”**. The “Privacy” frame provides functions to manage this logical network name and create private network.

“Use Default (Public Network)” button

You can directly set the network name back to the default “HomePlugAV” by clicking the “Use Default (Public Network)” button first, then press the “Set Local Device Only” button.

The screenshot shows the "ALL168208 Utility" window with the "Privacy" tab selected. The window has a title bar with a close button. Inside, there are tabs for "Main", "Privacy", "Diagnostics", and "About". The main text says: "Use this screen to create a Private Network that provides you with extra security." Below this is a section titled "Private Network Name" containing a text box with "HomePlugAV" and a button labeled "Use Default (Public Network)". A note below says: "Do not share the network name with others you do not want to be part of this network." Further down, it says: "After setting the name above, choose how it will be applied below:". This is followed by a section titled "Place On This Network" with two options: "Only the device attached to this computer (the Local Device). (isolates this computer from others):" with a "Set Local Device Only" button, and "ALL devices whose Password has been entered. (They communicate together but are isolated from devices with a different network name)" with a "Set All Devices" button. At the bottom right are "Close" and "Cancel" buttons.

ALL168208 Utility

Main Privacy Diagnostics About

Use this screen to create a Private Network that provides you with extra security.

Private Network Name

HomePlugAV OR Use Default (Public Network)

Do not share the network name with others you do not want to be part of this network.

After setting the name above, choose how it will be applied below:

Place On This Network

Only the device attached to this computer (the Local Device).
(isolates this computer from others): Set Local Device Only

OR

ALL devices whose Password has been entered.
(They communicate together but are isolated from devices with
a different network name) Set All Devices

Close Cancel

Figure 7: Privacy Frame Screen

“Set Local Device Only” button

The “Set Local Device Only” button is used to change the network name of the local device only. After changing the network name to a new one, all the devices existing in the same network before will no longer be able to communicate or respond to you, because they will not have the same network name with the local device.

“Set All Devices” button

The “Set All Devices” button is used to change the whole logical network’s devices, both local and remote, that showed in the Main frame. Please fill in each remote device’s password in advance following the instructions in Sec 3.1 (“Enter Password” button) so that this function can proceed normally.

2.3. Diagnostics Frame

The “Diagnostics” frame shows the system information and the history of all the devices that have been found before (Figure 8).

The **upper window** of Diagnostics frame shows the host computer's system data and it shows:

- MAC Address of all NICs (network interface card)
- MAC Address and the firmware version of the ALL168208 200Mbps PLC-Ethernet Bridge device which is connected to each NIC
- Computer name
- User name
- Processor and operating system information
- Utility program version
- Versions of all the driver DLLs and libraries used

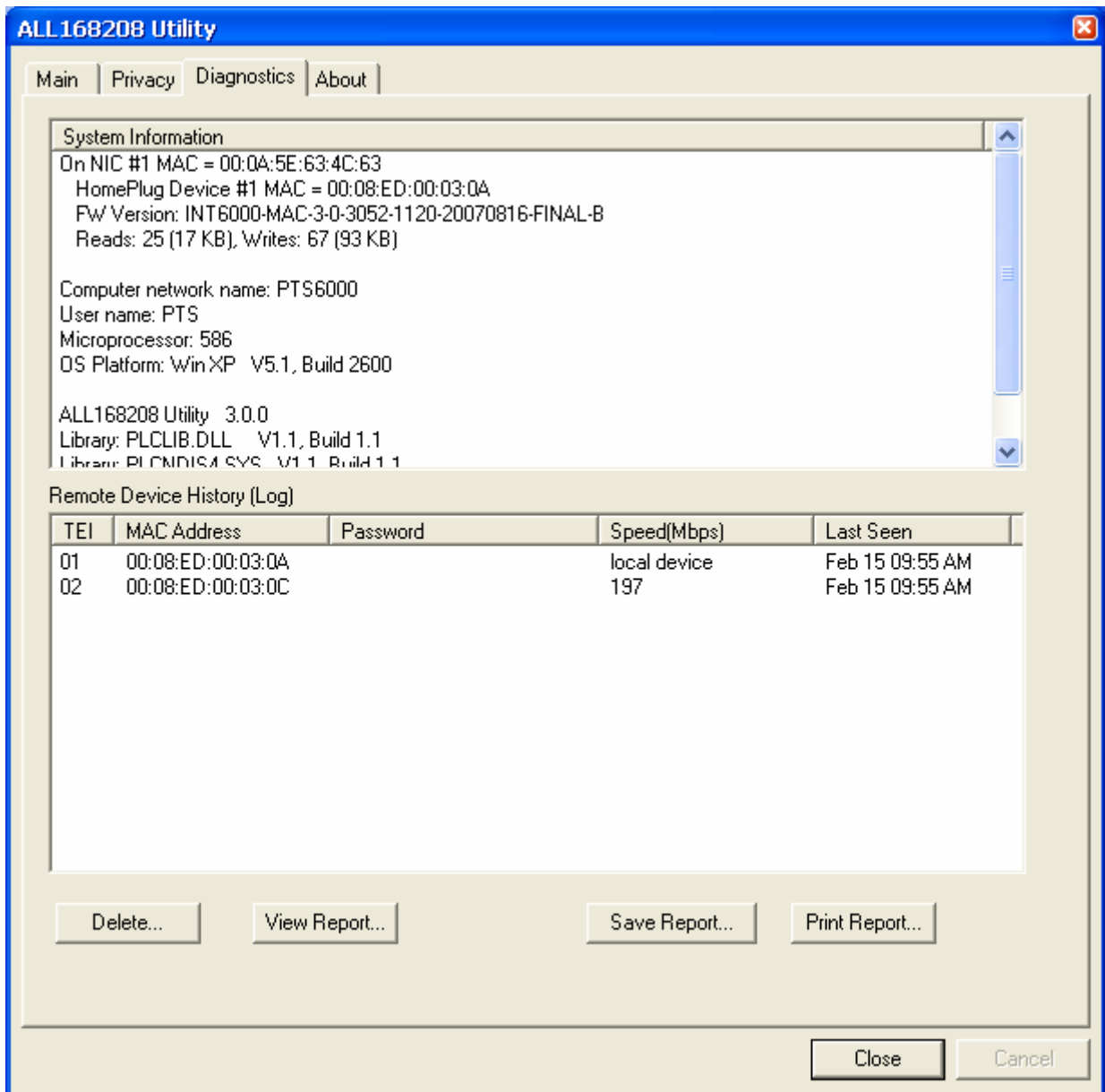


Figure 8: Diagnostics Frame Screen

The **lower window** of Diagnostics frame contains the history of all remote devices which have been found by the computer previously. All the devices will be shown here, regardless of they are currently active or not. The following information is available from the list:

- TEI
- MAC Address
- Password
- Speed(Mbps)
- Last Seen

The diagnostics information displayed on the upper and lower window could be saved to text file or print out by printers. Devices which no longer existed in the network can be deleted using the “Delete..” button.

“Delete...” button

Select the device which is no longer existed in the network by clicking its record first, then click this button to delete the record.

“View Report...” button

Click this button to view all the device information displayed on the upper and lower window by the default text editor.

“Save Report...” button

Click this button to save all the device information displayed on the upper and lower window to a text file directly.

“Print Report...” button

Click on this button to print the all diagnostics information to your default printer directly.

2.4. About Frame

The “About” Frame shows the software version, and manufacturer information.

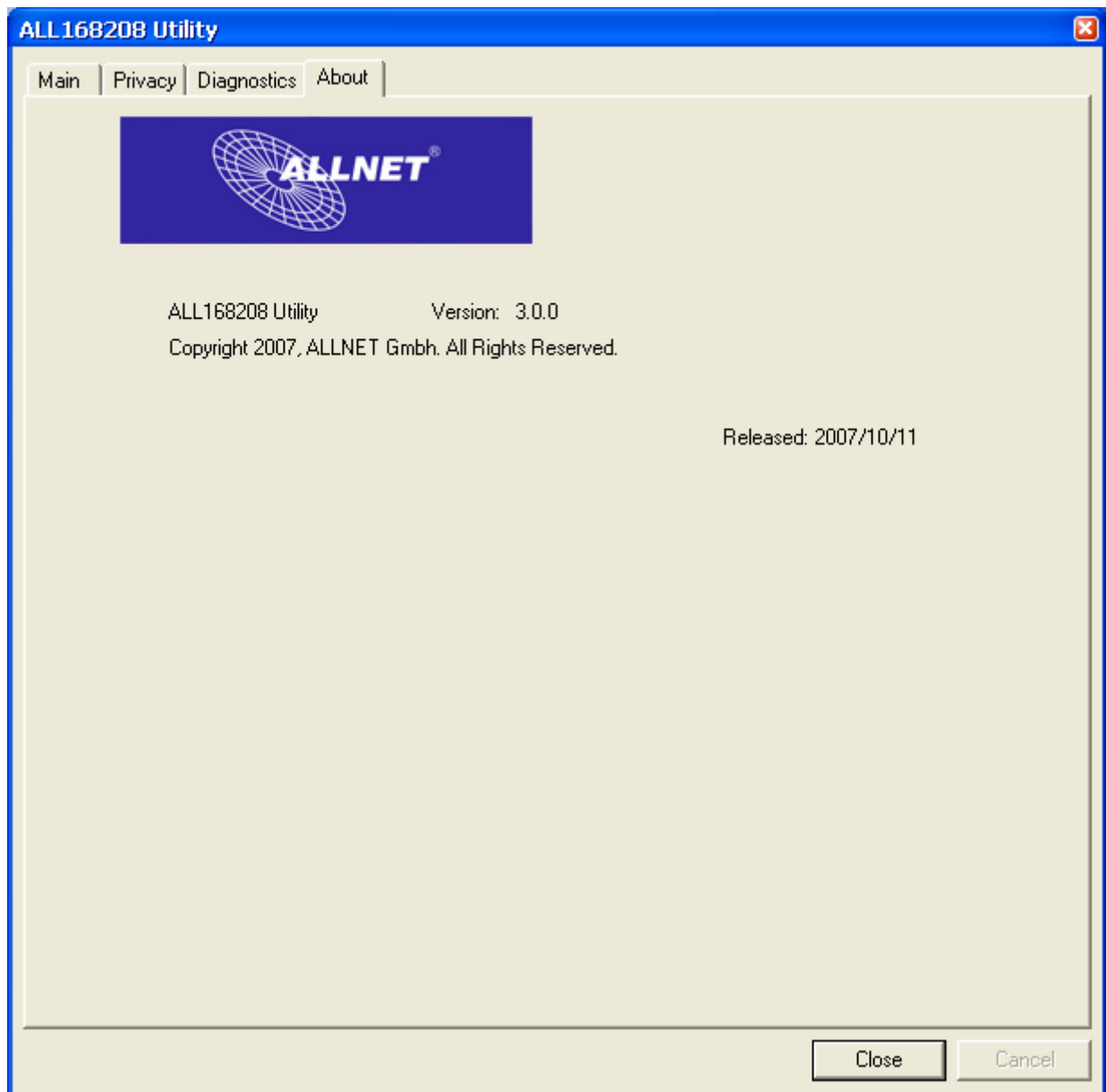


Figure 9: About Frame Screen



CE --- Declaration of conformity

For the following equipment:

Powerline Switch Hub Device

ALL168208 (200 Mbps PLC Switch Hub)



The safety advice in the documentation accompanying the products shall be obeyed. The conformity to the above directive is indicated by the CE sign on the device.

The ALLNET ALL168208 (200 Mbps PLC Switch Hub) conforms to the Council Directives of 73/23/EEC and Amendment Directive of 93/68/EEC.

This equipment meets the following conformance standards:

EMI: EN 55022 :1998 +A1 :2000+A2 :2003

EMS: EN 55024 :1998 +A1 :2001+A2 :2003
IEC 61000-4-2 :1995+A1 :1998+A2 :2000
IEC 61000-4-3 :2002+A1 :2002
IEC 61000-4-4 :1995+A1 :2000+A2 :2001
IEC 61000-4-6 :1996+A1 :2000
EN 60950-1:2001

This equipment is intended to be operated in all countries.

This declaration is made by

ALLNET Computersysteme GmbH

Maistr. 2

82110 Germering

and can be downloaded from <http://www.allnet.de/ce-certificates/>.